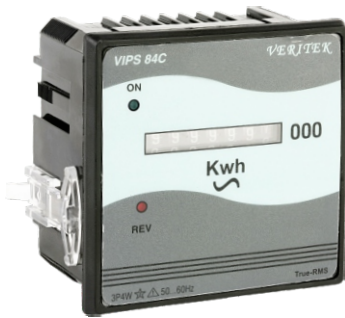


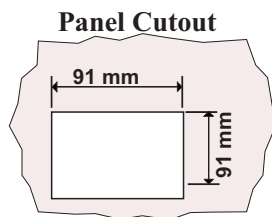
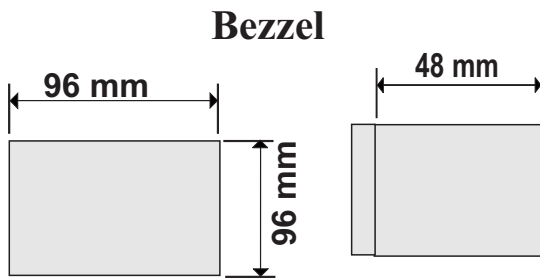
# ENERGY METER COUNTER



## FEATURES

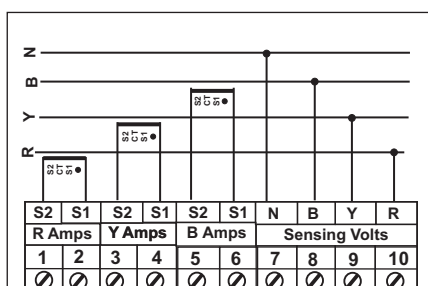
- State of Art Microcontroller Based Design
- 6 digit Stepper motor counter
- Site programmable CT ratio( Reduced Inventory)
- True RMS measurement
- Reverse polarity & power ON Indication

## MECHANICAL DIMENSION



## Electrical Wiring / Connection Diagram

### Back View



## APPLICATION

- Generation control panel
- Distribution control panel
- Load Analysis System

### CT RATIO SELECTION CHART ( DIP SWITCH )

Switch 1	Switch 2	Switch 3	Switch 4	Switch 5	CT Ratio
ON	OFF	OFF	OFF	OFF	5 / 5 Amps
OFF	ON	OFF	OFF	OFF	10 / 5 Amps
ON	ON	OFF	OFF	OFF	15 / 5 Amps
OFF	OFF	ON	OFF	OFF	20 / 5 Amps
ON	OFF	ON	OFF	OFF	25 / 5 Amps
OFF	ON	ON	OFF	OFF	30 / 5 Amps
ON	ON	ON	OFF	OFF	40 / 5 Amps
OFF	OFF	OFF	ON	OFF	50 / 5 Amps
ON	OFF	OFF	ON	OFF	60 / 5 Amps
OFF	ON	OFF	ON	OFF	75 / 5 Amps
ON	ON	OFF	ON	OFF	80 / 5 Amps
OFF	OFF	ON	ON	OFF	100 / 5 Amps
ON	OFF	ON	ON	OFF	125 / 5 Amps
OFF	ON	ON	ON	OFF	150 / 5 Amps
ON	ON	ON	ON	OFF	200 / 5 Amps
OFF	OFF	OFF	OFF	ON	250 / 5 Amps
ON	OFF	OFF	OFF	ON	300 / 5 Amps
OFF	ON	OFF	OFF	ON	400 / 5 Amps
ON	ON	OFF	OFF	ON	500 / 5 Amps
OFF	OFF	ON	OFF	ON	600 / 5 Amps
ON	OFF	ON	OFF	ON	625 / 5 Amps
OFF	ON	ON	OFF	ON	750 / 5 Amps
ON	ON	ON	OFF	ON	800 / 5 Amps
OFF	OFF	OFF	ON	ON	1000 / 5 Amps
ON	OFF	OFF	ON	ON	1200 / 5 Amps
OFF	ON	OFF	ON	ON	1250 / 5 Amps
ON	ON	OFF	ON	ON	1500 / 5 Amps
OFF	OFF	ON	ON	ON	1600 / 5 Amps
ON	OFF	ON	ON	ON	2000 / 5 Amps
OFF	ON	ON	ON	ON	2500 / 5 Amps
ON	ON	ON	ON	ON	3000 / 5 Amps

## SPECIFICATIONS

- Aux. Supply: 90-270 VAC/DC
- Input Amps : 0.02 - 6.0 Amps for 6A model
- Input Volts : 0-500VAC L-L
- Burden : 0.2 VA max per input for current & Voltage signals 3VA max.on Aux Supply
- Display : 6 digit stepper motor counter
- Accuracy : Class 1.0
- Computation : True RMS
- Frequency : 45Hz - 56Hz
- Ambient : -10 to 55°C
- Humidity : < 95 % Non-condensing
- Weight : 200gms
- Dimensions : 96 X 96 X 48 mm
- Panel Cutout : ( 90<sup>+1</sup><sub>-0</sub> )mm X ( 90<sup>+1</sup><sub>-0</sub> ) mm
- Mounting : Flush Mounting with side clamps.
- Multiplication Factor : 5 Amps-0.01  
10-80Amps -0.1  
100-800Amps-1  
1000-3000Amps-10