



**Features:**

- ▶ Programmable:
  - CT ratio, Under/Over Current
  - Phase Fail, Phase Reversal
  - Current Asymmetry
  - Starting time delay & Auto reset time
- ▶ Configurable for 1Ø & 3Ø systems
- ▶ Individual faults can be deactivated as per system requirement
- ▶ Programmable delay and hysteresis
- ▶ Auto/manual reset option
- ▶ Consistent reliability with high accuracy
- ▶ 3 digit bright LED display to indicate current
- ▶ LED indication for healthy and faulty status



**Advantages:**

- ▶ Protection of power assets
- ▶ Detection and isolation of faults
- ▶ Speedy tripping to avoid damage
- ▶ Maintain supply continuity of healthy circuit

**Applications:**

- ▶ Control Panel
- ▶ Feeder/Motor
- ▶ Generator
- ▶ Transformer
- ▶ Electrical Distribution

**Display**

Display	3 digits, 1 row 7 segment LED Display
Digit Height	0.56" (14.3 mm)

**Input Specification**

System	1Ø-2 wire/3Ø-4 wire
Burden on supply	< 3VA
Delay	0.2 to 99 sec

**Measuring Parameters**

- ▶ Current

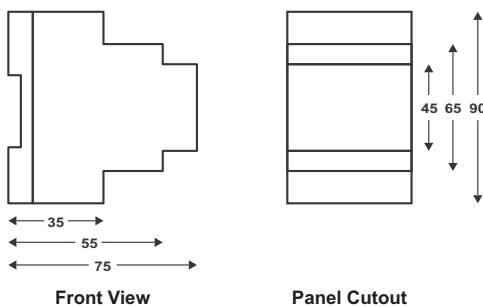
**Set Points**

Set Point	10%-120% of nominal current
Scroll Time	5 seconds

**Mechanical Specification**

Dimension	90x45x75mm (LxBxH)
Mounting	DIN Rail (35mm)/2xm4 screw
Weight	200 g

**Dimension**



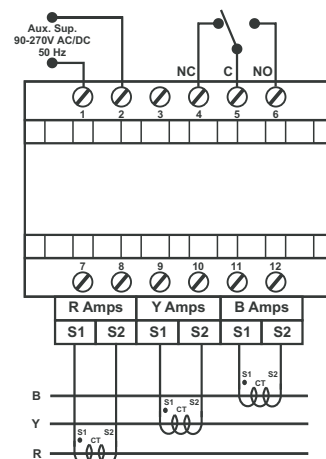
**Output Specifications**

Relay Contacts	1 Potential free Contact (NO, C & NC)
De-energise	On trip
Contact rating	6A/230V AC/28V DC
Nominal Current	5A

**Environmental Specifications**

Operating Temperature	-10 deg C to 70 deg C
Storage Temperature	-20 deg C to 55 deg C
Humidity	< 95 RH

**Connection Diagram**



**Connection Diagram**

Ordering Code	Description
VIPS AT01-05	Current relay rating 0-5A
VIPS AT01-30	Current relay rating 0-30A