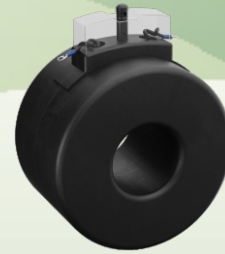




**Features:**

- ▶ ABS plastic moulding
- ▶ Apertures accepting a wide range of bus bar
- ▶ CTs are ultrasonically welded and unbreakable



**Advantages:**

- ▶ Easy bus bar mounting
- ▶ Highly cost effective
- ▶ Compact in size

**Applications:**

- ▶ Switchgear
- ▶ Distribution system
- ▶ Generator sets
- ▶ Control Panels
- ▶ Control Devices
- ▶ Overload protection

**Input Specifications**

Rated Primary Current      20A to 400A  
 Rated Secondary Output    5A/1A (Consult factory)

**Technical Specifications**

Rated Burden                    1VA, 2.5VA & 5VA (any other on request)  
 Class of Accuracy            1 and 3  
 Thermal Nominal Continuous   1.2 times rated current continuously  
 Rated Current                 2.55x Ith  
 Thermal Short Circuit Current   60xIn  
 Insulation Class                Class E  
 Max. Operating Voltage       720V maximum  
 Insulation Test Voltage       3KV AC for 1 minute  
 Compliance Standard         IEC61869-2

**Environmental Specification**

Operating Temperature        20°C to 70°C  
 Storage Temperature         0°to 55°C  
 Humidity                        <95% RH

**Ordering Information**

Ordering Code	Ratio	Class	Burden (VA)
VIPS 308050-20/5-5-1	20/5	5	1
VIPS 308050-30/5-5-1	30/5	5	1
VIPS 308050-40/5-5-1	40/5	5	1
VIPS 308050-50/5-3-1	50/5	3	1
VIPS 308050-60/5-3-1	60/5	3	1
VIPS 308050-75/5-3-1	75/5	3	1
VIPS 308050-80/5-3-1	80/5	3	1
VIPS 308050-100/5-1-1	100/5	1	1
VIPS 308050-150/5-1-2.5	150/5	1	2.5
VIPS 308050-200/5-1-2.5	200/5	1	2.5
VIPS 308050-250/5-1-5	250/5	1	5
VIPS 308050-300/5-1-5	300/5	1	5
VIPS 308050-400/5-1-5	400/5	1	5

**For Higher VA Burden**

Ordering Code	Ratio	Class	Burden (VA)
VIPS 308050-100/5-1-5	100/5	1	5
VIPS 308050-150/5-1-5	150/5	1	5
VIPS 308050-200/5-1-5	200/5	1	5

**Dimensions**

