

**Features:**

- ▶ 7 Segment LED display
- ▶ Site Programmable CT ratio
- ▶ True RMS measurement
- ▶ Password protection
- ▶ Bar graph indication of load current

**Advantages:**

- ▶ Protection of power assets
- ▶ Detection and isolation of faults
- ▶ Speedy tripping to avoid damage
- ▶ Maintain supply continuity of healthy circuit

Applications:

- ▶ Control Panel
- ▶ Feeder/Motor
- ▶ Generator
- ▶ Transformer
- ▶ Electrical Distribution

Measuring Parameters

- ▶ V_{LL} (Individual/Average), V_{LN} (Individual/Average)
- ▶ Current (Individual/Average)
- ▶ Frequency
- ▶ Earth Leakage current
- ▶ Run Hours

Supply Voltage

Auxiliary Supply	90-270V AC/DC ($\pm 15\%$)
Frequency	50Hz/60Hz

Display

Display	4 rows of 3 digits, 7 segment LED display Bar graph for percentage load
Digit Height	0.39" (9.9 mm)

Input Specifications

Electrical Connection	3Ø-4 wire
Input Voltage Range	0-500V AC (L-L)
Input Current Range	0.05 A – 6 A AC
Frequency	45 Hz to 65 Hz
Resolution	Frequency : 0.1 Hz Voltage : 1 V Current : 0-99: 0.1 A 100-999 : 1 A >1000 : 0.01 kA
Accuracy	Class 1 for voltage and current
Burden	<0.2 VA for voltage and current

Output Specifications

Relay Output	1 C/O potential free contact (NO, C & NC) de-energise on fault
--------------	---

Settable Parameters

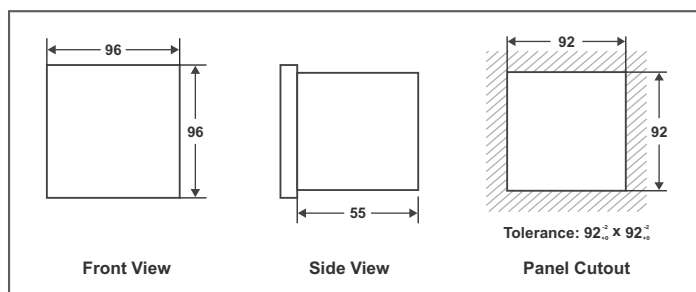
C. T. Primary	1/5A to 10000A (Programmable)
C. T. Secondary	1/5A (Programmable)
Trips	Programmable: Under/Over voltage, Under/Over Frequency, Under/Over Current, Phase reversal, Phase fail, Phase loss, Current asymmetry, Voltage Asymmetry, Locked rotor, Rotor earth fault

Environmental Specifications

Operating Temperature	-10°C to 55°C
Storage Temperature	20°C to 75°C
Humidity	< 95% RH

Mechanical Specifications

Mounting	Flush Mounting with Side Clamps
Weight	280 g
Enclosure Material	ABS Thermoplastic

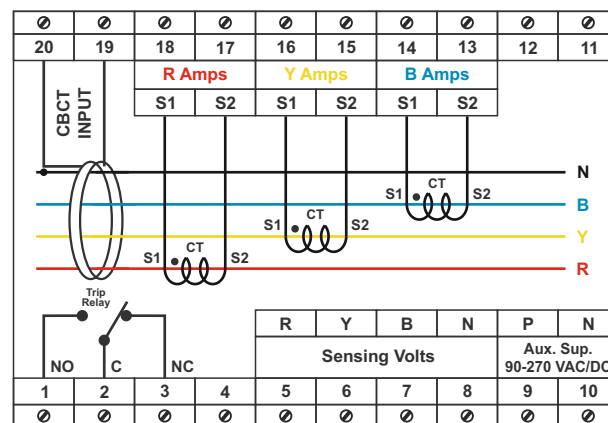
Dimension**Applicable Standards**

Radiated Emission	CISPR22
Fast Transient Burst Test	IEC61000-4.4
Conducted Emission	IEC61000-6.3
Test of Immunity to Electromagnetic RF Fields	IEC61000-4.3
Test of Immunity to Conducted Disturbances, Induced by Radio-Frequency Fields	IEC61000-4.6
Test of Immunity to Electrostatic Discharges	IEC61000-4.2
Surge Immunity Test	IEC61000-4.5

Safety Standards

Safety Standard	IEC61010-1
Pollution Degree	II
Installation Category	III
High Voltage Test	2 kV AC, 50Hz for 1 Minute Between Aux.& Measuring Inputs

Connection Diagram



Ordering Information

Ordering Code	Description
VIPS 83M	Motor Protection Relay Flush mounted