

Features:

- ▶ Consistent reliability with high accuracy
- ▶ Time Delay User settable (4 Ranges)
- ▶ LED Indication for Power & Relay status
- ▶ ON Delay / Interval user selectable
- ▶ Compact Size

**Advantages:**

- ▶ Automatic compensation for variations
- ▶ Easy adjustment in desired automation
- ▶ Reduction in inventory cost (up to 80%)
- ▶ Easy switching reliability
- ▶ High mechanical endurance of operation ensures trouble free operation

Applications:

- ▶ Control panel
- ▶ Feeders / Motors
- ▶ Generator
- ▶ Transformer
- ▶ Electrical distribution

Input Specifications

Accuracy	±5% of full Scale
Repeatability	±0.5% or 50 ms
Reset	< 100ms on Interruption of Power

Output Specification

Output Contact	SPDT (1 C/O)
Contact Rating	5A/230V AC/28V DC

Functional Specification

Time Ranges	0-15 sec 0-60 sec 0-7.5 min 0-60 min
Led Indication	Power & Relay Status

Supply Voltage

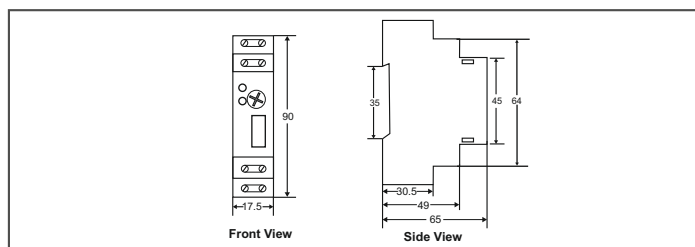
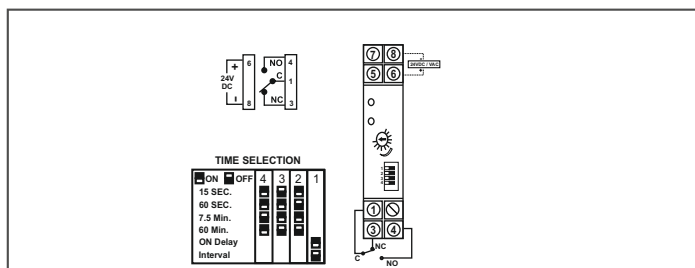
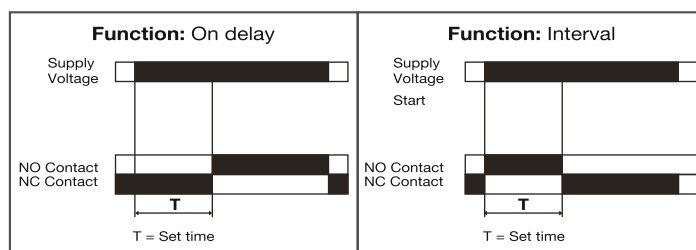
Auxiliary Supply	24V DC / 230 VAC ± 20%
Supply Frequency	50/60 Hz
VA Rating	5 VA Max

Environmental Specifications

Operating Temperature	-10°C to 55°C
Storage Temperature	-20°C to 75°C
Humidity	< 95% RH (non-condensing)
Protection Degree	IP20 (Terminals) IP54 (Front of housing)

Mechanical Specifications

Weight	65 g
Mounting	DIN Rail (35 mm)/ 2x m4 screw
Dimension	17.5x90x65 mm (WxLxH)

Dimension**Connection Diagram****Timing Diagram****Ordering Information**

Ordering Code	Description
VIPS 99	Timer